

Connecting with Telnet

Help Guide

Before you can access and reconfigure iPocket232 Inc. products, you must configure the following settings locally:

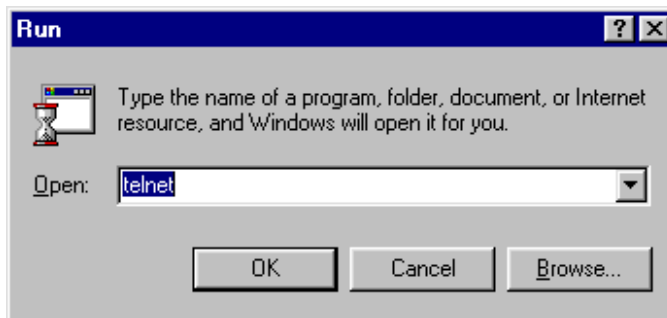
- the IP Address and Subnet Mask (or automatically with DHCP)
- the Gateway address if necessary (or automatically with DHCP)
- the Remote Password

Refer to the Quick Install Guide or User Guide for more information on configuring these settings.

To connect to the iPocket232 unit remotely using Telnet:

1. From the Start menu, select Run...

The Run window appears.

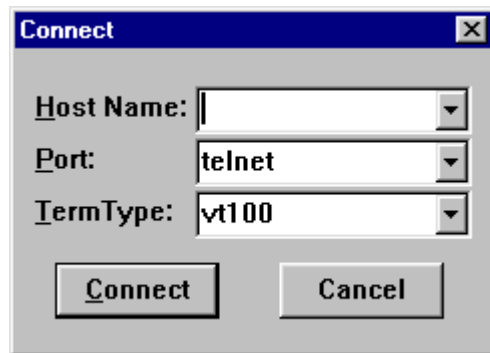


2. Type telnet in the Open field and click OK.

The Telnet application window appears.

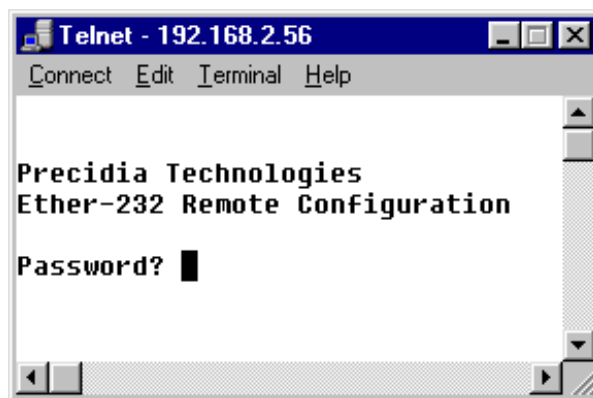
3. From the Connect menu, chose Remote Systems...

The Connect window appears.



4. Type the IP address of the unit in the Host Name field, and choose Telnet in the Port field.
5. Click Connect.

You are prompted to enter your password in the Telnet window.



6. Type the Remote Password you created during local configuration, and press Enter.

The Configuration screen appears in the Telnet window.

If you typed an invalid password, the connection to the host will be dropped. Ensure you have the correct IP address and Remote Password, and go back to Step 3.

NOTE: *The Remote Password is case sensitive.*